



Building ecosystems of care with justice-involved populations

March 30, 2023



Housekeeping

- This event will be recorded and sent out with the slides
- Put your organization in the chat – send it to all participants
- Put your questions in the chat throughout
- Please keep yourself on mute while not talking (by phone or on the Zoom platform)



Introductions



Katie Wilt
Director of Special Programs
& Healthy Community
Network

WellSpan Health



Melissa Plotkin
Executive Director

York County Reentry
Coalition



Amy Evans
Assistant Director, Forensic Cross
Systems Programs, York County
Human Services

Community Action Recovery and
Diversion (CARD)



Michele Crosson
Project Director

WellSpan Philhaven
Specialized Treatment and
Recovery Team (START3)

Introductions



Brook Henderson
MSW Care Navigator

AccessHealth Spartanburg



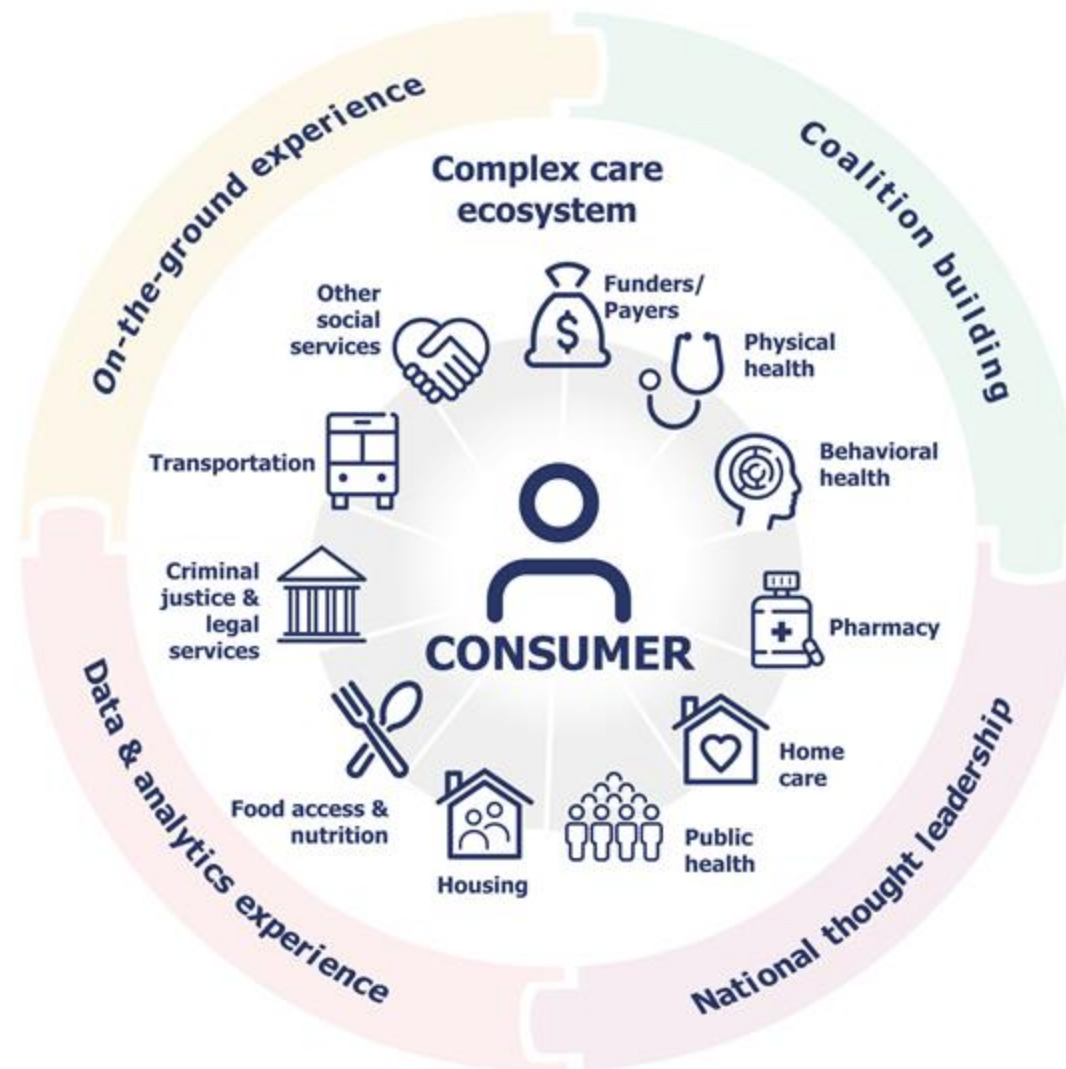
Don Williams
Director of Community
Relations

Jumpstart Ministry



THE CAMDEN COALITION APPROACH

We leverage our strengths to build ecosystems of care with a diverse set of stakeholders to better serve the needs of patients and practitioners



Strengthening ecosystems of care



- Alignment, coordination, and collaboration of local healthcare and social care systems, community organizations, government agencies, and people in the communities being served.
- They co-design, implement, and lead new or improved programs, systems, and policies that bridge organizations and sectors to better serve the health and well-being of individuals and communities.





How to build an ecosystem of care



Identify community needs



Identify partners and allies



Define your population



Continuous process
and quality improvements



Define your aim



Create an intentional
structure with a focus on
sustainability

National update: strengthening ecosystems of care for justice-involved populations



February 2023 - HHS Approves California's Medicaid and Children's Health Insurance Plan (CHIP) Demonstration Authority to Support Care for Justice-Involved People

- ✓ Increase coverage, continuity of care, and appropriate service uptake through assessment of eligibility and availability of coverage for benefits in carceral settings just prior to release.
- ✓ Improve access to services prior to release and improve transitions and continuity of care into the community upon release.
- ✓ Improve coordination and communication between correctional systems, Medicaid and CHIP systems, managed care plans, and community-based providers.



Agenda

- Overview of York County, Pennsylvania and Ecosystem Summary
- Community (Consumer) Advisory Board
- Outcomes and Impact of Ecosystem
- Future Planning
- Barriers
- Key Takeaway

ACCESSIBLE • ACTIVE • AFFORDABLE • AGRICULTURAL
• BEAUTIFUL • CARING • CENTRAL • COMFORTABLE •
COMMUNITY • CONSERVATIVE • CONVENIENT • DIVERSE
• ENGAGED • ENTERPRISING • FRIENDLY • GENEROUS
• GROWING • HARD WORKING • HISTORICAL • HOME
• INDUSTRIAL • INDUSTRIOUS • MANUFACTURING •
PAROCHIAL • RESILIENT • RESOURCEFUL • RURAL •
SCENIC • TRADITIONAL • VIBRANT



OUR GOALS:

Plan for Information/Data Sharing

Common Definition of Success (Sustainability)

Increased Inclusion of Consumer Voice

~450,000 people in County

~45,000 in York city

**Proximity to Harrisburg, Gettysburg,
Lancaster PA & Baltimore MD**

ECOSYSTEM SUMMARY

Initiatives across York County are **creating safer, healthier communities** by working collaboratively to connect people with justice involvement to health care and social services.

- Improved access to behavioral health services through START
- Increased access to Medication Assisted Treatment (MAT) through YCRC
- Driving systems change through CARD
- Development of a Reentry Opportunity Center (ROC) to streamline needs identification and referrals
- Consumer Advisory Board created and funded
- Trauma-informed trainings for justice personnel & START
- National Ecosystem Learning Collaborative site with Camden Coalition, National Center for Complex Health & Social Needs

COMMUNITY IMPACT

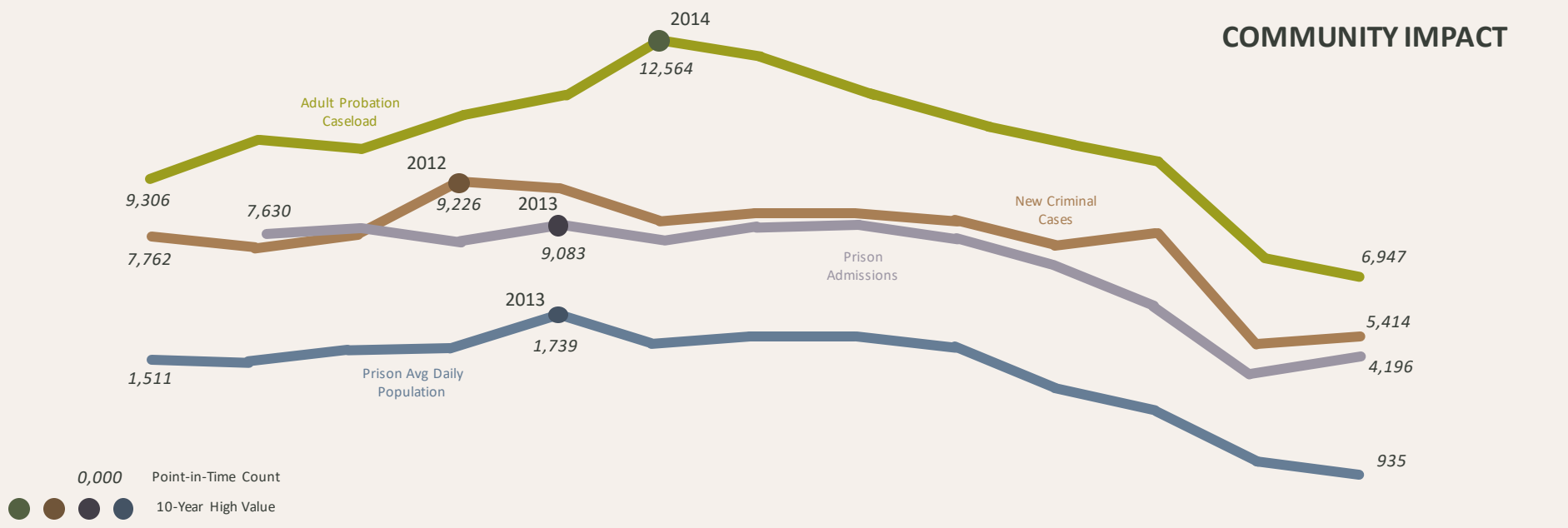
- **38% reduction in County Prison population over 10 years***
- **3200+ emergency room diversions since 2021****
- **93% decrease in wait times over traditional outpatient treatment*****

* Data courtesy of CARD & York County Prison
** Since beginning of START clinical operations on 7/21/21
*** 6 months pre-incarceration inpatient admissions and 6 months post-release.

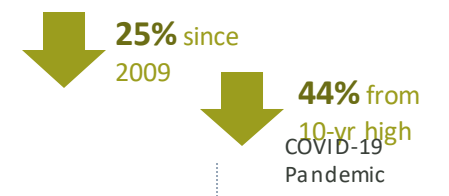
JOINT COMMUNITY ADVISORY BOARD



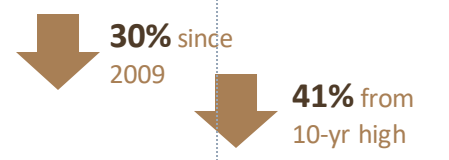
COMMUNITY IMPACT



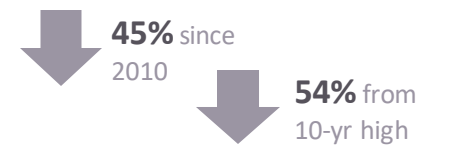
Adult Probation Caseload



New Criminal Cases Filed



York County Prison Admissions

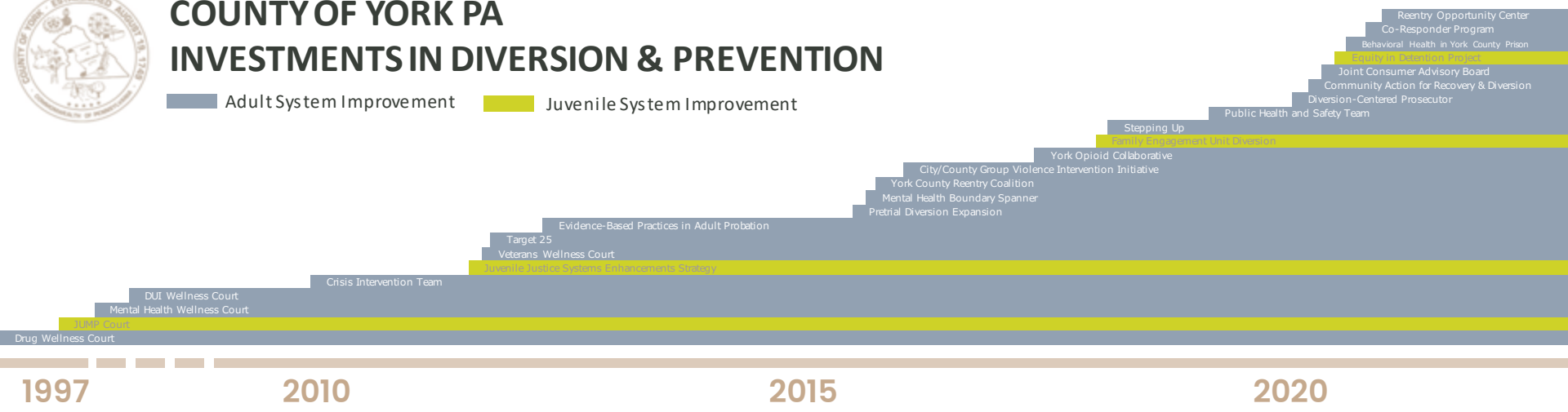


Prison Avg Daily Population

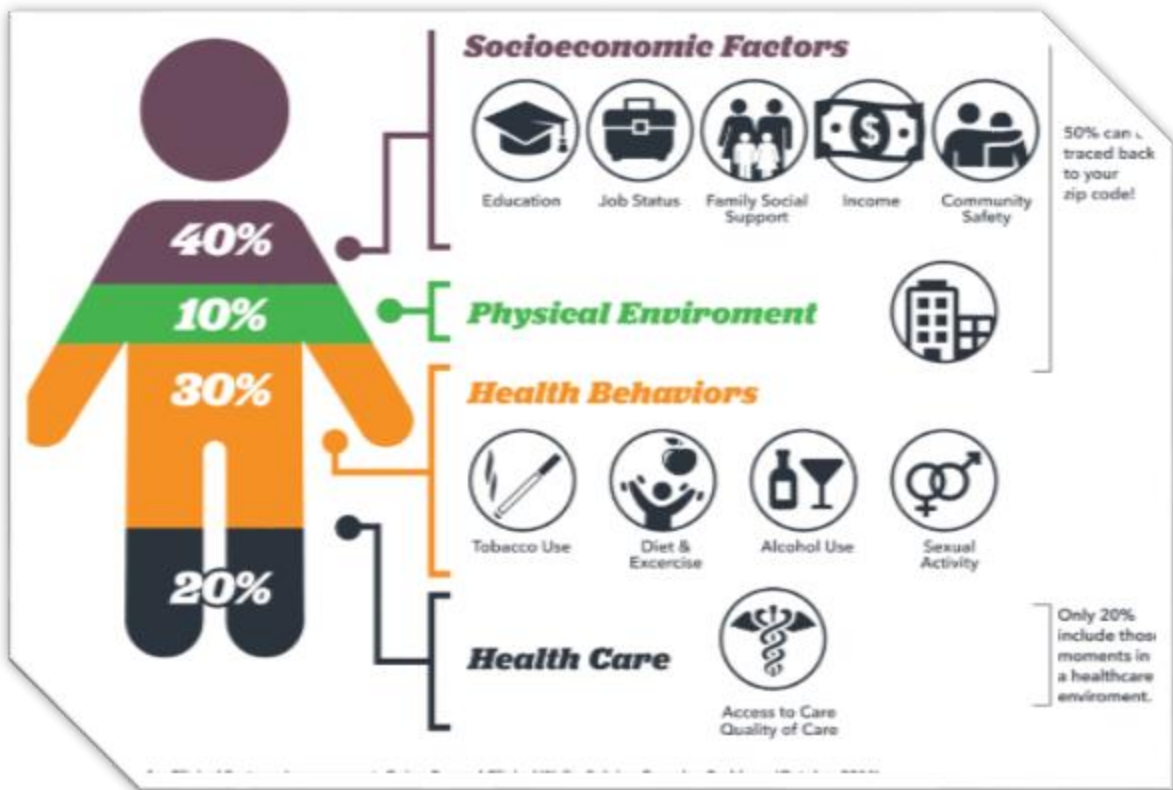


COUNTY OF YORK PA INVESTMENTS IN DIVERSION & PREVENTION

■ Adult System Improvement ■ Juvenile System Improvement



Copyright © 2022. Community Action for Recovery & Diversion. 2009-2021 data courtesy of the Administrative Office of Pennsylvania Courts and York County Prison. rev. 7/22.



The “why” behind healthcare partnering with criminal justice

- Social determinants of health
- Barriers to accessing Care
- Subpopulations & specialized interventions



Collaboration Supports Significant Patient Impact

Access

3000 ED diversions related to behavioral health and 12k+ START encounters

↑ Connection to primary care post release

3 in 4 attending MAT appointments post release

>65 instances of transportation support through Lyft and bus passes

Utilization

93% decrease in behavioral health traditional outpatient wait time

↓ ED Visits saving >\$4M/year to the health system

↓ Medical Group no-show rates post supports

8% recidivism rate post supports

Addressing SDOH Barriers

1,400 outpatient appointments addressing SDOH barriers

2 in 3 connected to short- or long-term housing post release

Connection to SNAP or shelf stable meal for food insecurity

Review for and connection to Medicaid upon release

Central York Wellness, Diversion, & Reentry Hub

Over the next 3-5 years, York County Prison will transition from solely a jail space to a true community hub. Clustering prevention, diversion, and reentry services here makes the most of space freed up by long-term prison population declines.

Reentry Multidisciplinary Team (MDT)
est. 2022

Reentry Opportunity Center* (ROC)
opening 2023

Secure Detention for Youth
as early as 2023

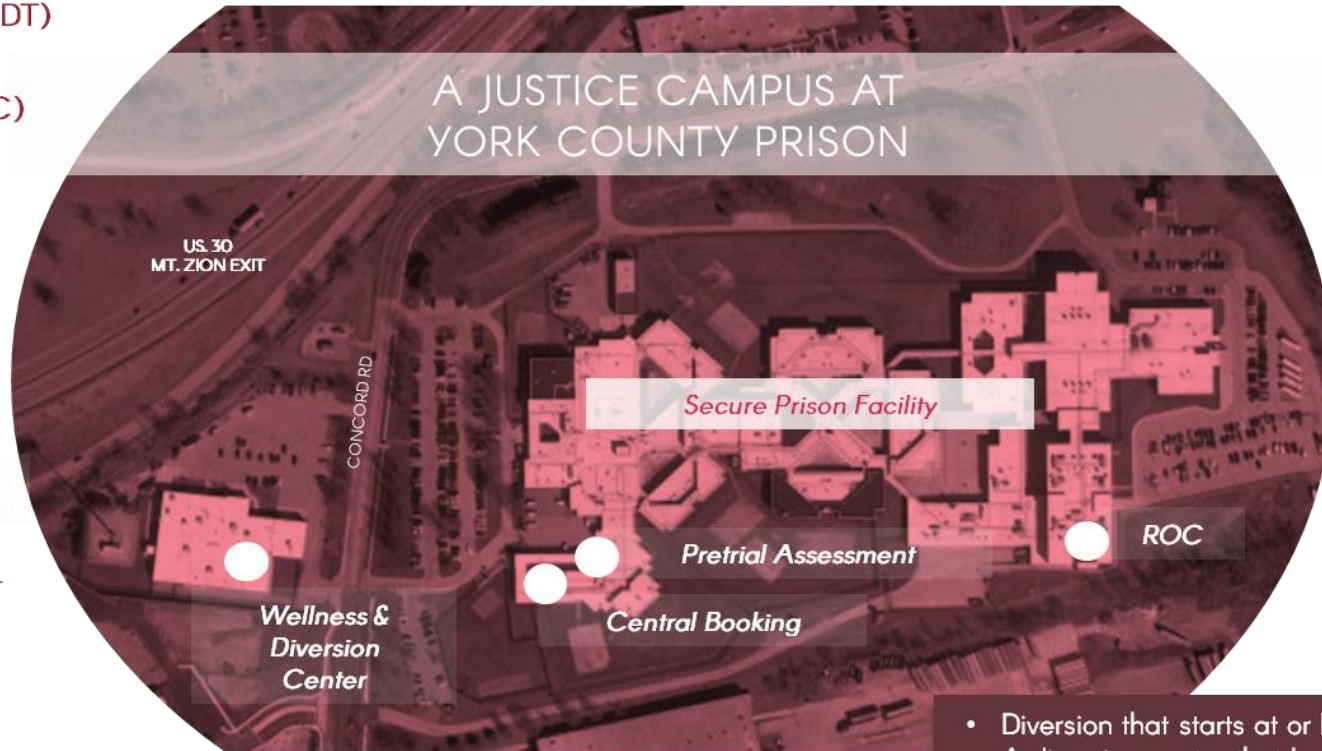
Expanded Pretrial Assessment
Late 2023/2024

Central Booking
2024-2025

Wellness & Diversion Center
2024-2025

YCP Competency Restoration Unit
2024-2025

YCP Behavioral Health Unit
2024-2025



KEY BENEFITS

- Diversion that starts at or before booking.
- A diversion center that bolsters countywide co-response and mobile crisis services.
- Reentry services that seamlessly bridge release and engage the community.
- Ability to provide important behavioral health services locally in the secure prison.
- Significant reductions in jail time spent waiting for evaluations and assessments or admissions to state behavioral health facilities.



These strategies lead to a *safer, healthier community* where people with behavioral health needs are connected to healing care and support as they interact with the justice system.

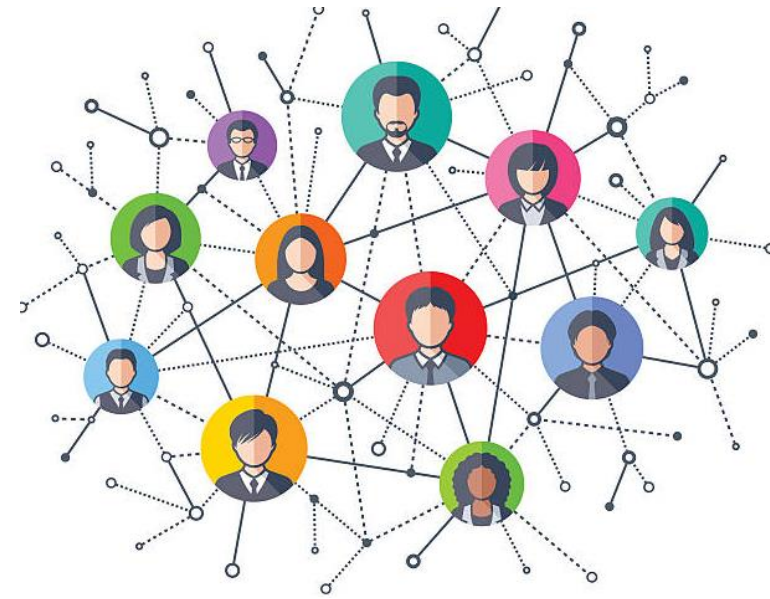
Barriers

- **There were many barriers to data sharing.**
 - The ecosystem improved their data sharing practices
 - Opportunities for efficient and productive sharing
 - Strict regulations, protected data, and systems miscommunicating with each other.



Key Takeaway:

Building an ecosystem is about building relationships in new and different ways.



Ecosystems require

- Cross-system partners
- Institutional trust
- Flexibility
- Responsiveness
- Creative collaboration

*“As one person or one organization, it’s hard to just push at something as big as an ecosystem and hope **it** happens.*

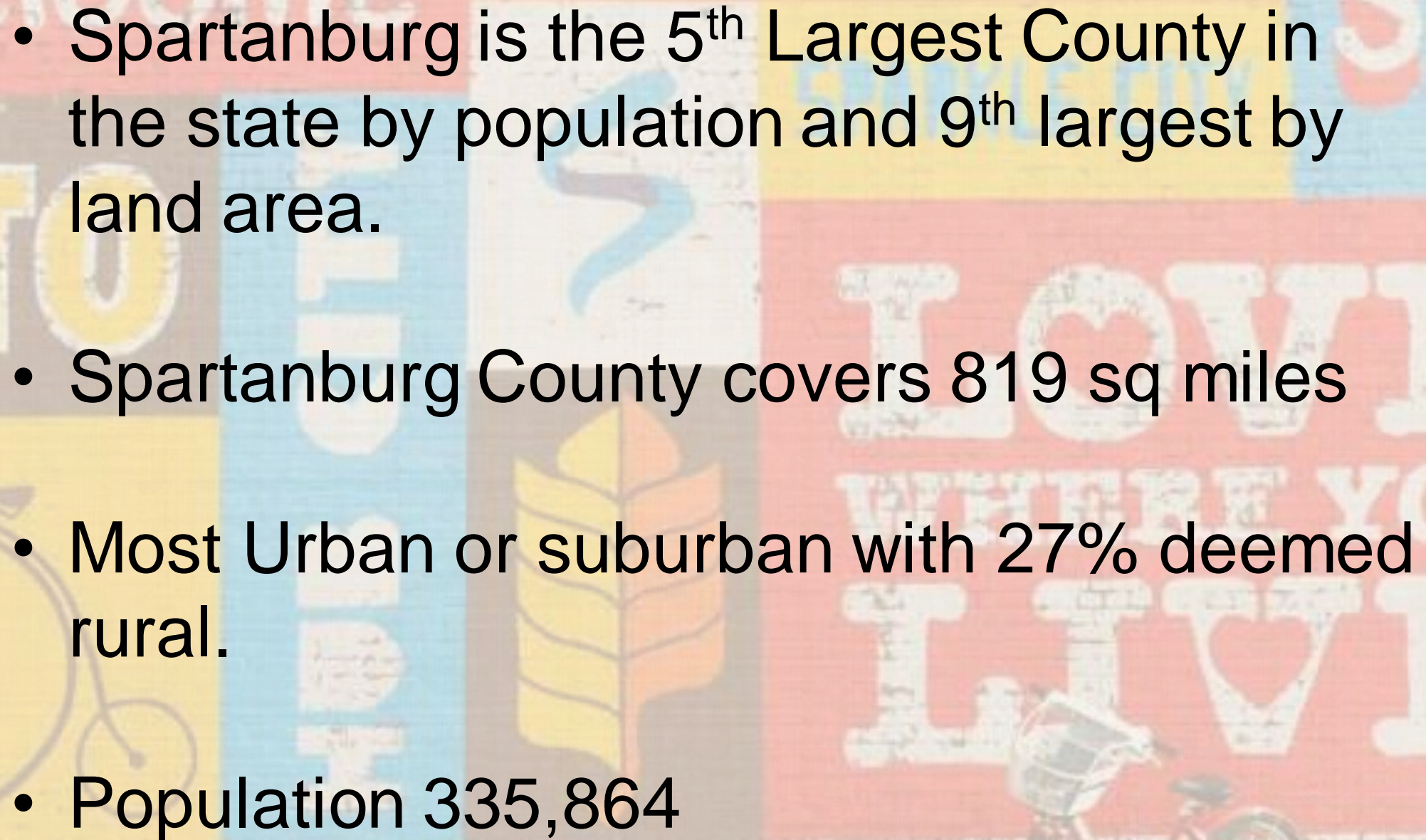
*Especially in really early stages, **find champions** from a couple of different sectors. People that get it and can pull levers and make things happen that you couldn’t by yourself.”*

– Amy Evans, AICP – CARD/York County Human Services

Opportunity Project

Wrap around re-entry services for those transitioning back to community from incarceration



- 
- Spartanburg is the 5th Largest County in the state by population and 9th largest by land area.
 - Spartanburg County covers 819 sq miles
 - Most Urban or suburban with 27% deemed rural.
 - Population 335,864

Access Health

Affiliated with Spartanburg Regional Healthcare System

Mission:

To improve access to health care for the uninsured of Spartanburg, Cherokee and Union counties through sustainable health system change that will result in better health outcomes and 100% access to effective, efficient, safe, timely, patient-centered, and equitable healthcare.



Community Partners

These are a few of our
50 plus partnering
agencies.

- Spartanburg Regional Healthcare System
- Spartanburg Area Department of Mental Health
- Forrester Center for Behavioral Health
- ReGenesis Health Care
- St. Luke's Free Medical Clinic
- Welvista

JUMPSTART®

Transforming the lives of prisoners from the inside out



Don Williams
Director of Community
Relations at JUMPSTART

VISION

We imagine a day when the back of recidivism is broken in our state, our nation, and beyond.

MISSION

In partnership with donors, churches and community partners, we are discipling the incarcerated and assisting returning citizens with re-entry services.

BELIEF

God's future is greater than our past.

CORE VALUES

Accountability | Responsibility | Authority

OUR GOAL

100% Success for Those Who Choose to be Successful

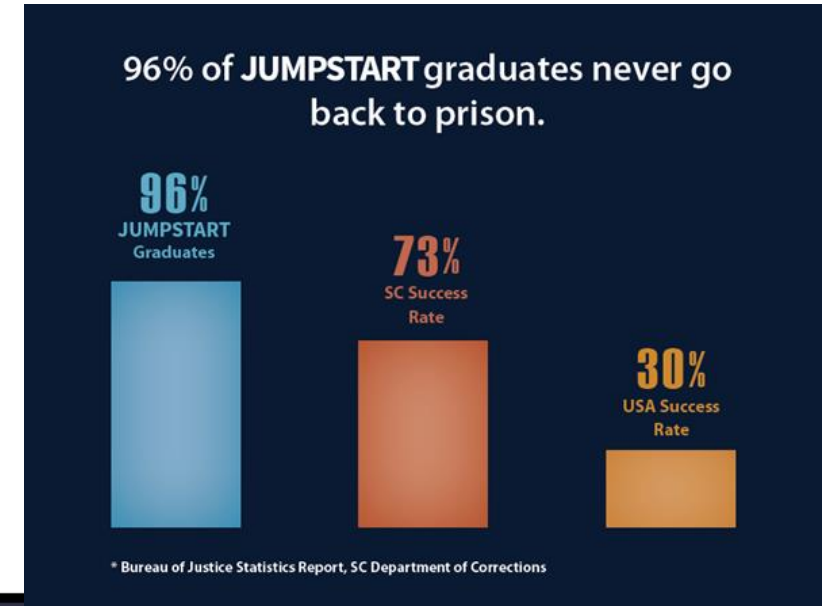
KEYS TO SUCCESS

Daily Surrender to Christ | Finding and Keep a Job | Setting and Keeping a Budget | Developing a Solid Support Team | Having Fun God's Way

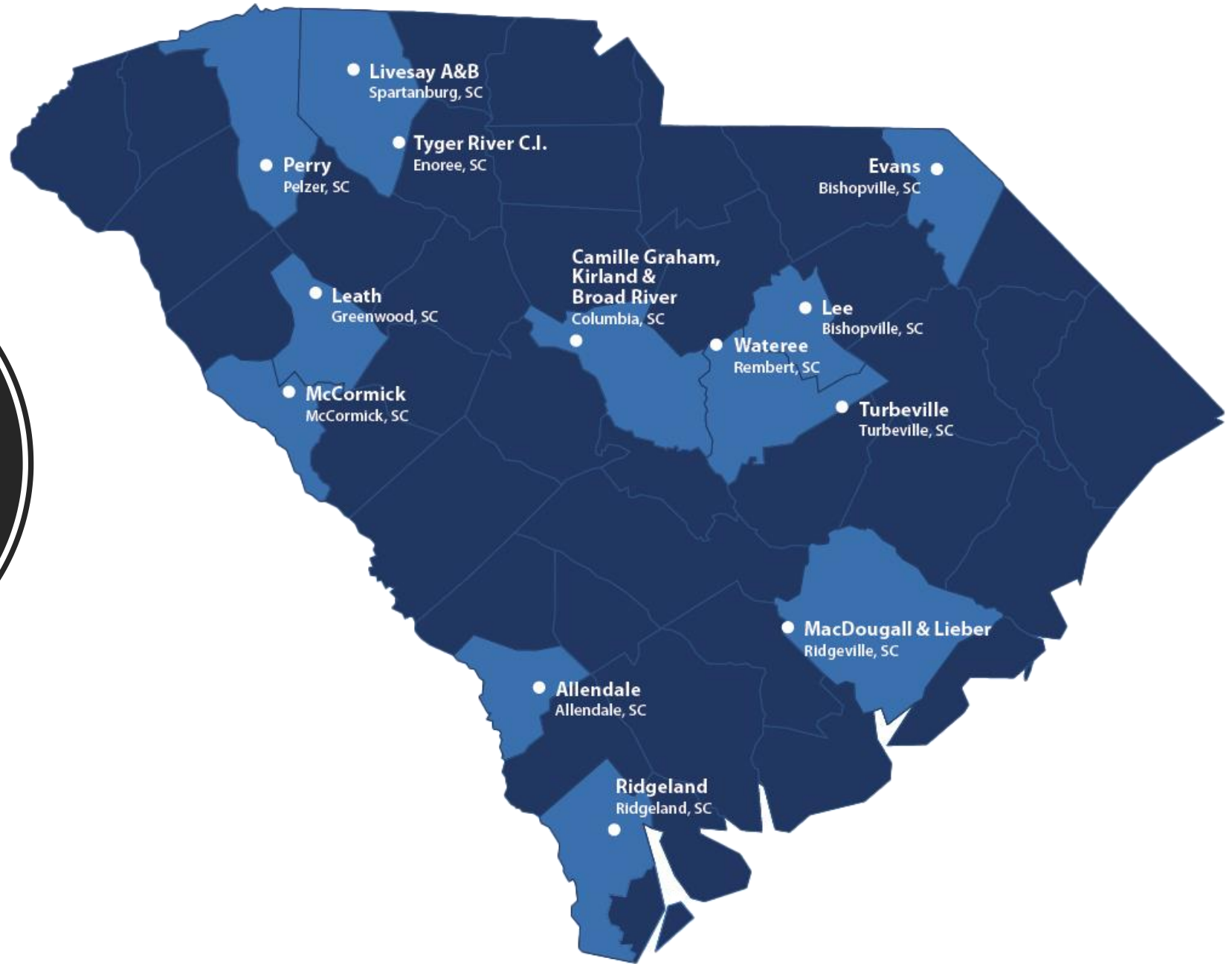
...To Break the Back of Recidivism

- Dedicated to helping returning citizens transition from incarceration to a lifestyle of “accountability”
- Guided by faith, love, hard work and responsibility
- Supported by churches, community leaders, employers, and reformed returning citizens

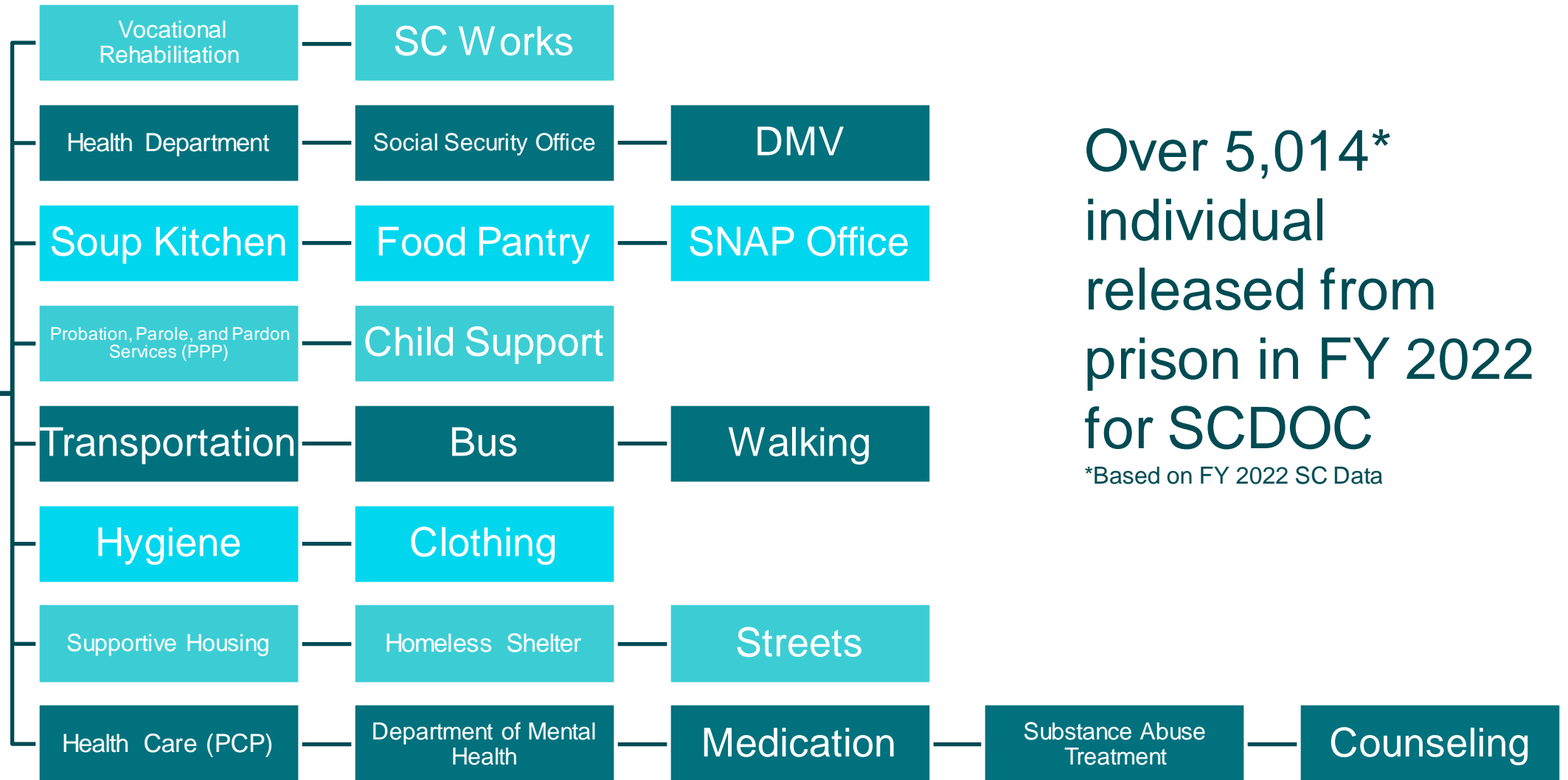
Ultimately to help returning Citizens transition into our community Productively and Permanently.



Active in 17
SC Prisons



South Carolina Department of Corrections (SCDOC) Release Process



Opportunity Project Release Current Process

SCDOC Discharge Plan

JumpStart

- Housing
- Transportation
- Hygiene/Clothing
- PPP/Child Support
- Social Security/Health Department/DMV
- Employment
- Food

AccessHealth

- Health Care
- Medications
- Transportation
- Substance Abuse Counseling
- Employment
- Housing
- Food
- Counseling
- PPP/Child Support
- Hygiene/Clothing

Department of Mental Health

- Counseling
- Medications

Executive Summary

At the Opportunity Project, we foster collaborative thinking to further support individuals transitioning after incarceration. By targeting and/or eliminating barriers we:

- Decrease Recidivism Rate
- Improve Health Outcomes
- Increase our workforce
- Provide sustainable opportunities for their future

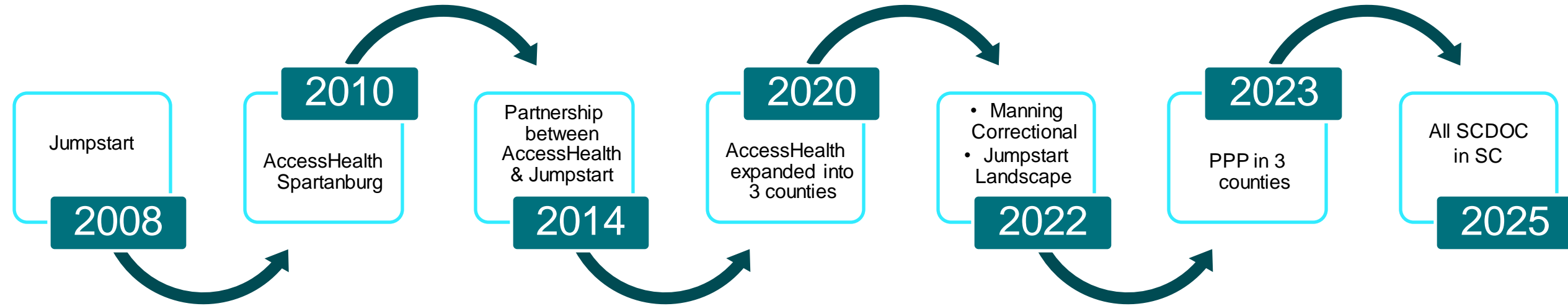
Opportunity Project has been selected for National Ecosystem Learning Collaborative site with Camden Coalition and National Center for Complex Health & Social Needs

OUR IMPACT

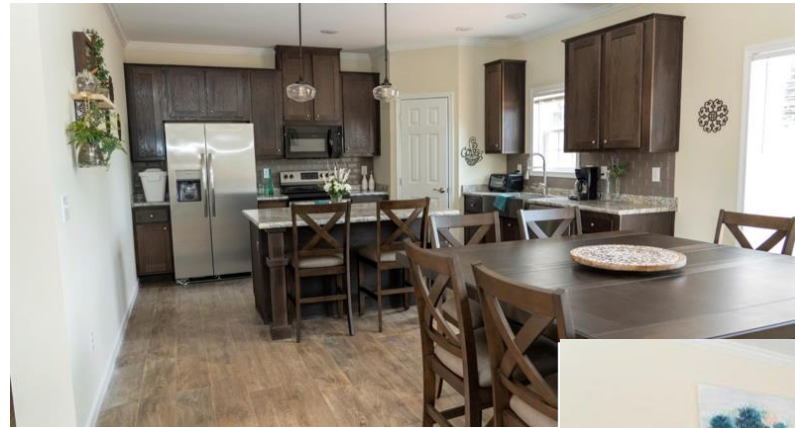
- **4% Recidivism Rate* Compared to 19% for South Carolina**
- **335 Enrolled since 2016**
- **\$12 Million Dollars of Cost Savings to State of South Carolina**

*Based on 2022 Jumpstart Data

Ecosystem Timeline



Kaitlin Lucas



How We Serve Re-Entrances

Individual is released from prison

Jumpstart refers individual to:

Tyger River Correctional refers Individual to:

Manning Correctional refers individual to:

AccessHealth enrolls individuals in program and connects them to:

Employment

Vocational Rehabilitation

Goodwill Services

Upstate Workforce Investment Board

Primary and Specialty Care

Medications

Mental Health Services

Food Resources

Substance Abuse Counseling

Housing

Monthly cross-sector follow up meeting with ecosystem partners to ensure connection to resources are completed

Our Ecosystem Streamlines Cost-Effective Care

Through regular collaboration, we have a centralized navigation system for those transitioning back in our community



ECOSYST

Monthly Service Connection Plan Meeting between:

- Jumpstart
- AccessHealth
- Dept. of Mental Health
- PPP
- Vocational Rehabilitation
- Goodwill Pathways
- Manning Correctional
- Tyger River Correctional



WORKFO

- Jumpstart Team Members
- AccessHealth Staff
- PPP Agents
- Vocational Rehabilitation Counselors
- Good Will Counselors
- Mental Health Counselors
- SCDOC Discharge Planners



CONSUM

Connect/help individuals with:

- Physical & Mental Healthcare
- Job Placement
- Housing
- Transition back to the community successfully

Our Ecosystem Impact



96%
JUMPSTART
participants
never go back to
prison compared
to a **30%**
national success



12 million
Cost savings to
the state of
South Carolina



>80
monthly hours
Personalized
mentorship to
JUMPSTART
participants per
month



50%
Reduction in
Emergency
Department
visits

Ecosystem service connections: By the numbers



2611+
Connected to
behavioral
health



12,446
Individuals enrolled to-
date



13,312+
Primary Care
visits



>25%
Obtained
insurance



12,428+
Received
prescription



2,184
Connected to
smoking



11,855+
Specialty Care
visits

Our ecosystem efforts ripple

4500

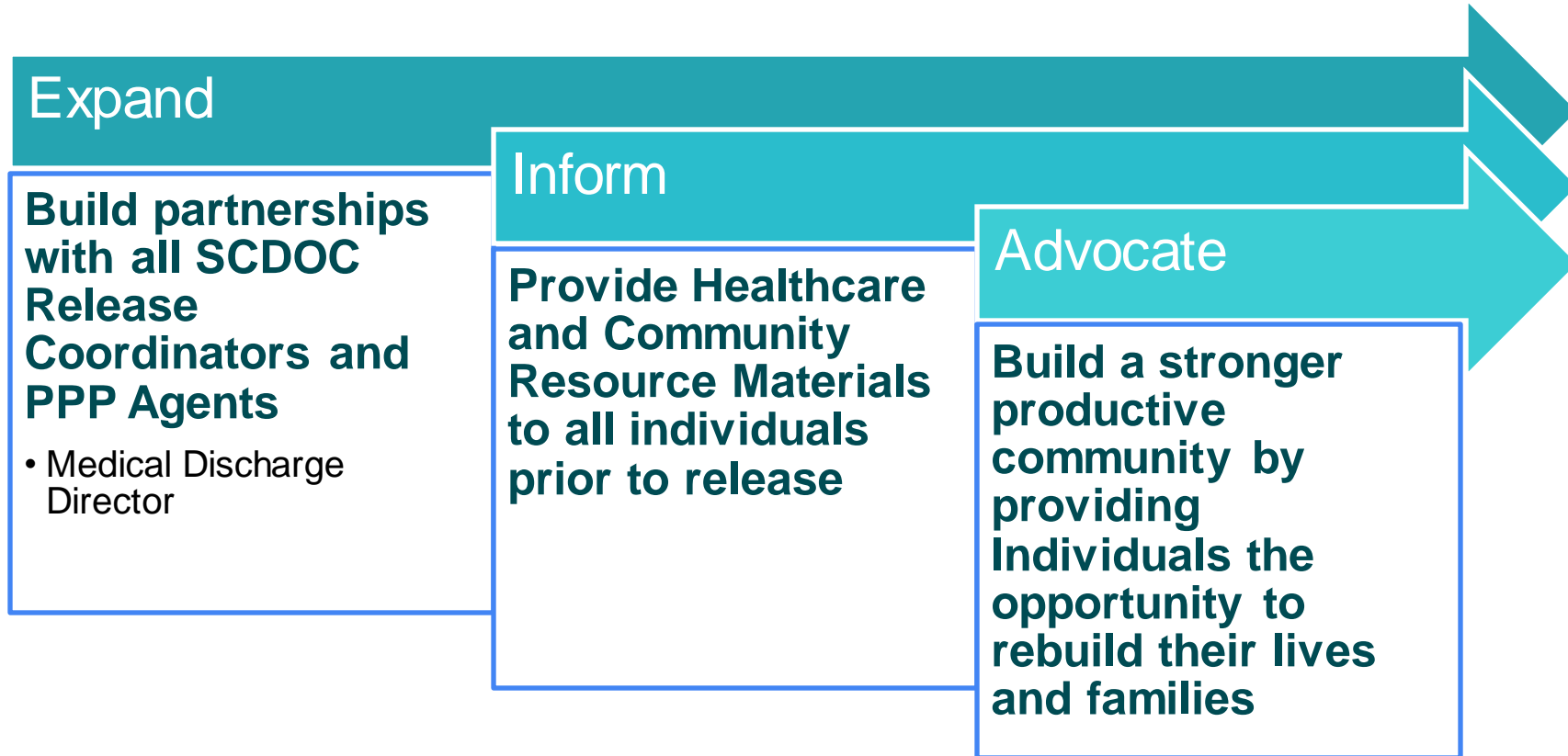
**immediate family members
are impacted by our services
annually**





- SCDOC Program/Policy Change
Reentry Curriculum
Discharge Planning Process
- Jumpstart inside the 3 remaining institutions
- Housing
- Transportation
- Increase Mental Health Services

Sustainability & Future Goals





Q&A

[The PATH Technical Assistance \(TA\) Marketplace](#) initiative provides funding for California providers, community-based organizations, counties, and others to obtain technical assistance resources to establish the infrastructure needed to implement Enhanced Care Management (ECM) and Community Supports.

- ✓ **Domain 2:** Community Supports: Strengthening Services that Address the Social Drivers of Health
- ✓ **Domain 4:** Enhanced Care Management (ECM): Strengthening Care for ECM 'Population of Focus'
- ✓ **Domain 5:** Promoting Health Equity
- ✓ **Domain 6:** Supporting Cross-Sector Partnerships
- ✓ **Domain 7:** Workforce



WE'VE BEEN SELECTED
as a PATH TA
Marketplace Vendor!

Check out the
TA Marketplace
today to browse
offerings from 47
unique vendors.

Register today to shop & apply for TA services:
ca-path.com/ta-marketplace







Join us at

Putting Care at the Center 2023

Nov. 1-3, 2023 in Boston, MA

Early bird registration open March 29-July 3

Also available:

- Sponsorship opportunities
- Interprofessional CEUs
- Discounts
- Virtual access for those unable to travel



***Putting Care at
the Center 2023***

*Elevating behavioral health
in whole-person care*

Learn more → camdenhealth.org/centeringcare23 | [#CenteringCare23](https://twitter.com/CenteringCare23)

Thank you!

National Center for Complex Health and Social Needs

An initiative of the Camden Coalition

www.nationalcomplex.care

[@natlcomplexcare](https://www.instagram.com/natlcomplexcare)

800 Cooper St., 7th Floor
Camden, NJ 08102

Presenter contact:

Jason Turi, jturi@camdenhealth.org

Katie Wilt, kwilt3@wellspan.org

Melissa Plotkin, mplotkin@yorkcountypa.gov

Amy Evans, asevans@yorkcountypa.gov

Michele Crosson, mcrosson4@wellspan.org

Brook Henderson, bhenderson@srhs.com

Don Williams, don.williams@jumpstartvision.org

Kaitlin Lucas, kaitlin.lucas@jumpstartvision.org



Extra Slides

Notes from meeting

- 10 min – Intro Jason
- 15 min WS
- 15 min – Spartansburg
- 10-15 min - QA

There's usually more than meets the eye ...

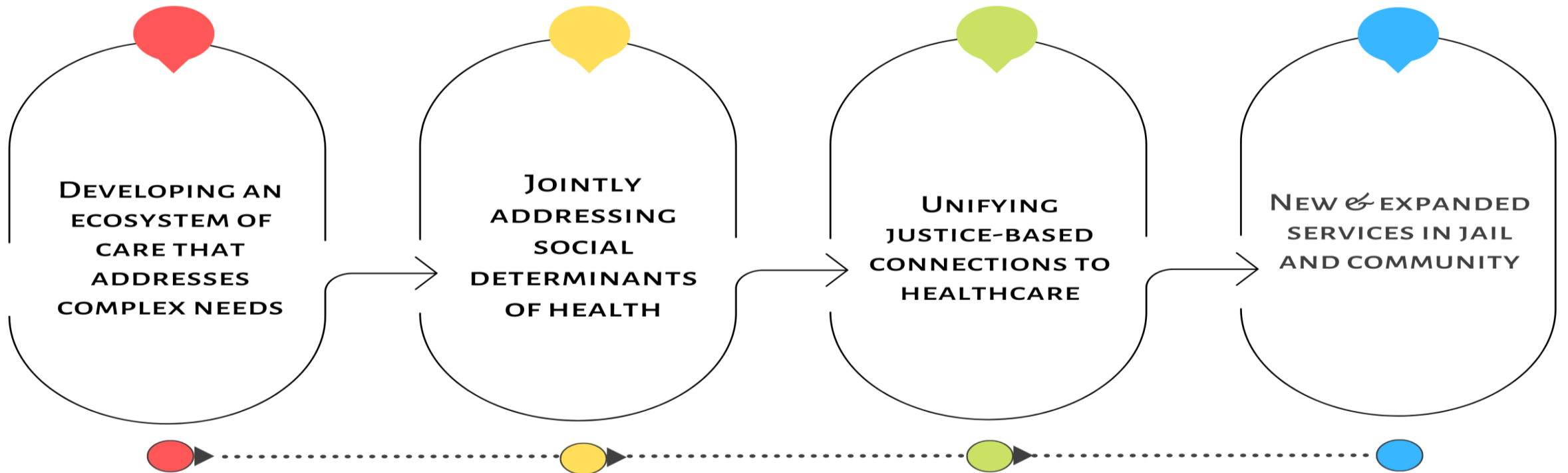
**Visible
Consequences**

- Theft/Burglary
- Drug Use
- Unemployment
- CYF Interventions in Families
- Assaults
- Repeated Incarceration
- MH Crisis
- Juvenile Delinquency

**Invisible
Drivers**

- Mental Abuse as a Child
- Homeless or Unstable Housing
- Combat Trauma
- Biological Predisposition to Addiction
- Mental Health Needs
- Victim of Physical Assault/Abuse
- Family History of Substance Abuse
- Toxic Stress
- Exposed to Alcohol/Drugs at Teen/Preteen Age
- Victim of Sexual Assault
- Parental Death or Abandonment
- Unhealthy Coping Skills
- Can't Find or Afford Help
- Chronic Pain/Injury
- Lack of Education, Job Skills
- Overuse of RX Pain Meds
- Foster Care Background

OUR ECOSYSTEM CHANGES SYSTEMS



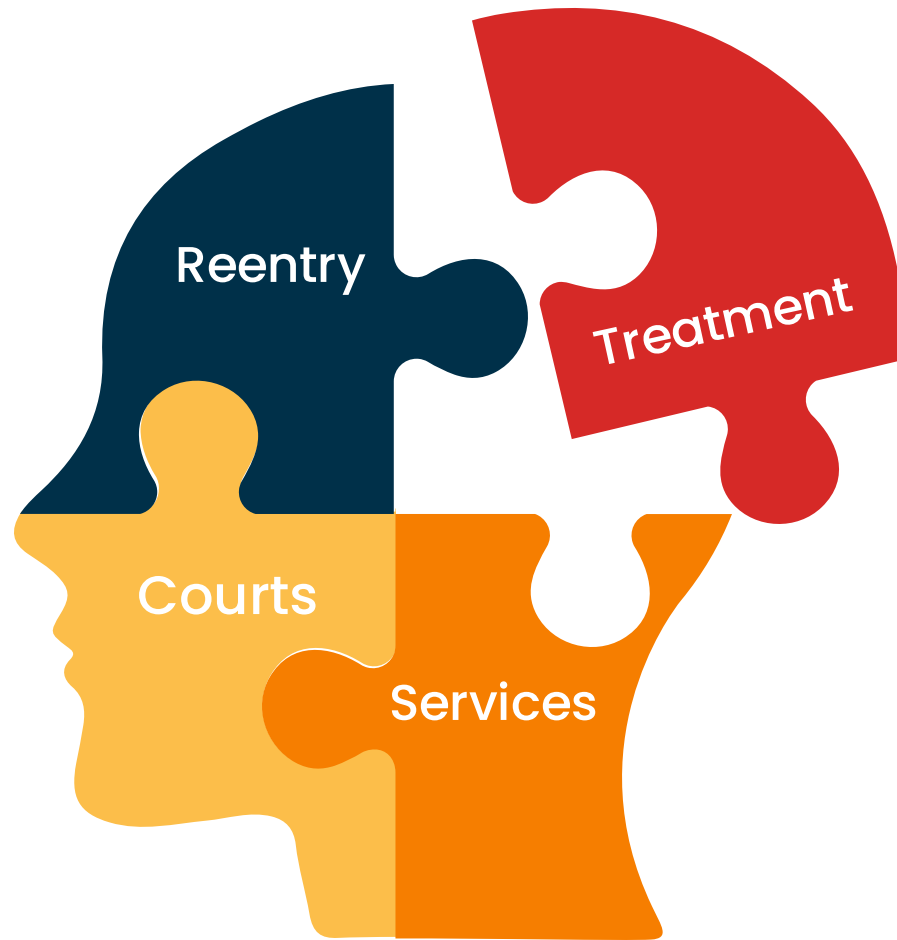


Conrad H.

During a rough spot in my life I was connected with services at START through York County's Mental Health Court. I really struggled at first, there were some things I did not want to address. However, with the support of START, I was able to connect with a psychiatrist and therapist that helped me immediately.

I was able to get referred to trauma therapy with their help and work with a great psychiatrist while waiting for a spot to open at another location for long term services. Without their support and their agency, I would have continued to make poor decisions and use drugs, which would've led me back to prison.

Positive Impacts



Incarcerated in YCP beginning of July 2021 for possession of drugs and owing fines



Connected to prison re-entry team



Released August 2021 to WellSpan's Recuperative Care Program: Arches to Wellness



Connections to vital services – *housing, food, transportation, counseling, etc.*



Success!



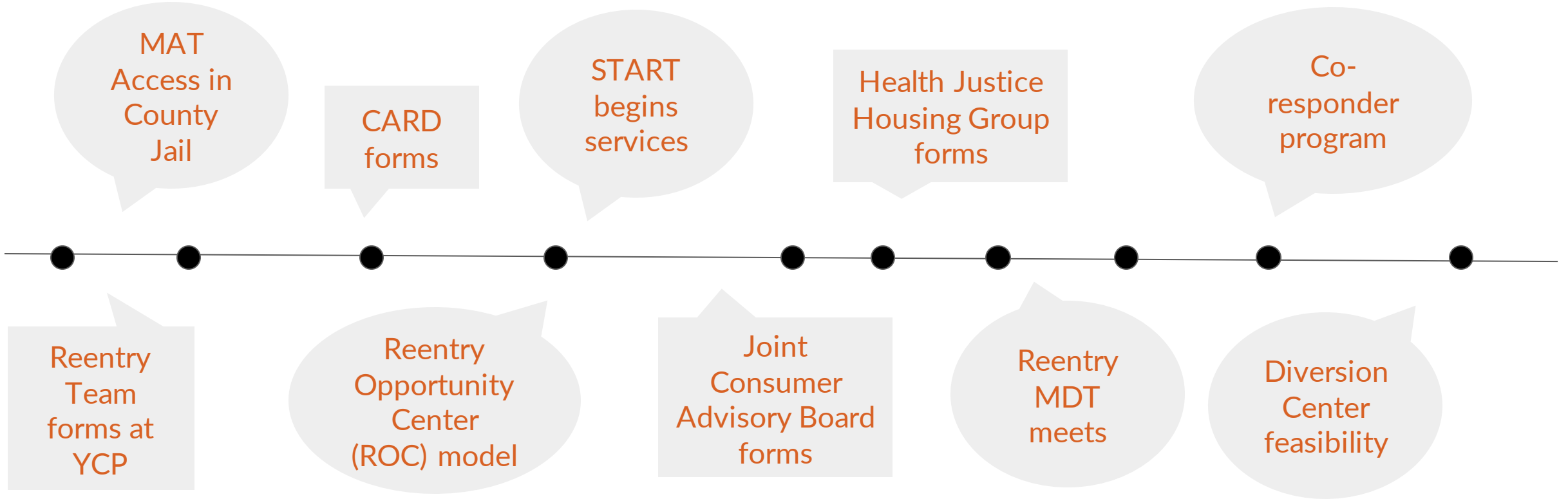
we have known for years that the over-involvement of *people with behavioral health needs in the justice system is really a public health crisis.*

Our work with health care partners increases public safety and achieves better outcomes for the thousands of York Countians with behavioral health concerns.

**COMMUNITY
PARTNER &
ECOSYSTEM
MEMBER**

**DAVE SUNDAY
DISTRICT
ATTORNEY
YORK COUNTY
PA**

ECOSYSTEM GROWTH





THANK YOU!



*WellSpan Philhaven
Community Action for Recovery and Diversion
York County Reentry Coalition*

A decorative border at the bottom of the page featuring several stylized tulips in shades of orange and pink, with dark blue-green leaves.